

Ülker Agroforestry Policy & Roadmap

Agroforestry is the protection, regeneration, planting, or management of trees in agricultural landscapes as they interact with annual crops, animals, wildlife, and people.

Agroforestry efforts contributes directly to SDGs 1 (no poverty), 2 (zero hunger), 3 (good health and wellbeing), 6 (clean water and sanitation), 8 (decent work and economic growth), 11 (sustainable cities and communities), 12 (responsible consumption and production), 13 (climate action), and 15 (life on land) and indirectly through implementation approaches to Goals 4 (quality education), 5 (gender equality), 9 (industry, innovation and infrastructure), 10 (reduced inequalities), 14 (life below water), 16 (peace, justice and strong institutions) and 17 (partnerships for the goals).

Trees play a significant part in nearly all terrestrial ecosystems and supply a variety of valuable products and services to both rural and urban residents. Most trees have various functions, including ones that are cultural, and offer a variety of advantages. They have also been used to designate land boundaries and to provide land-use rights. Trees are essential for land rehabilitation and soil health.²

Trees can simultaneously;

- Carbon sequestration from the atmosphere
- Bring the nutrients and water to the surface from the ground
- Create an environment in which above- and belowground biodiversity can thrive
- Increase soil organic matter and, as a result, soil carbon.
- Create microclimates that can be controlled.
- Provide livestock with fodder and shelter.
- Develop diverse farm enterprises.
- Improve the resilience of agricultural landscapes
- Keep a record of climate history.

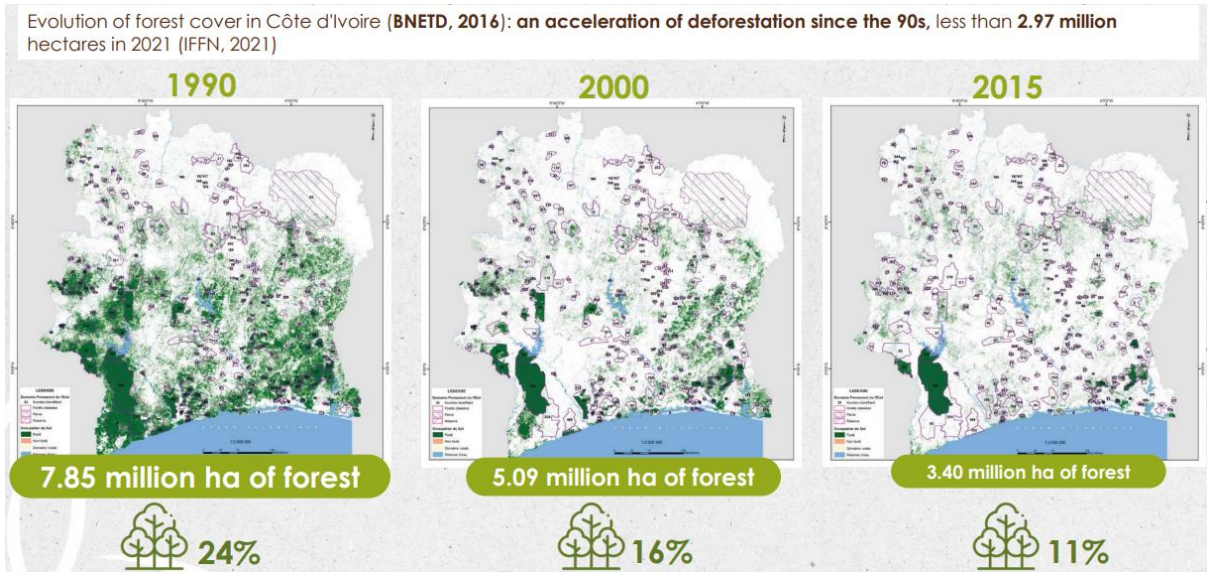
Trees give shade to young cocoa seedlings, increasing their survival rates and improving the chemical and physical qualities of the soil - all while increasing biodiversity. Cocoa agroforestry may also improve agricultural efficiency by reducing pests and diseases, improving soil fertility, and boosting yield and profit. Shaded cocoa is also beneficial to biodiversity conservation, connectivity between landscapes, and the rehabilitation of abandoned or degraded land.

Our agroforestry roadmap enables cocoa-producing families in the FILDISI supply chain to improve their socio-economic living conditions and contribute to the conservation of natural resources. The approach we employ also seeks to assist farmers in developing market linkages for the fruits and other goods produced through agroforestry.

We define Agroforestry as follows: minimum 30% shade tree cover with minimum 20 permanent shade trees and of at least 5 different shade tree species.

Önem follows the main criteria for agroforestry of Conseil du Café-Cacao (CCC)

- i. Planting of barrier species around the cocoa plantations in order to limit the spread of Cocoa Swollen Shoot virus disease and to mark borders
- ii. Planting of non-cocoa trees on the cocoa plantations, provided that:
 - i. density of cocoa trees is not lower than 800 plants per ha
 - ii. shade level on the plantation stays between 30 and 50 %
 - iii. plant species planted next to the cocoa trees are biologically compatible
 - iv. plant species are selected in partnership with the farmers



Our Objectives

- Promote deforestation-free cocoa production.
- Support smallholder farmers in adopting agroforestry systems.
- Enhance biodiversity and carbon sequestration through tree planting.
- Foster long-term partnerships with cocoa-growing communities.

Core Principles

- **Sustainability:** Ensure all cocoa sourced by pladis comes from farms adhering to sustainable agroforestry practices by 2035.
- **Inclusivity:** Collaborate closely with smallholder farmers, cooperatives, and local stakeholders to co-create solutions.
- **Transparency:** Regularly report progress and share success stories with stakeholders.
- **Innovation:** Invest in research and technology to improve agroforestry practices.

Our KPIs

- Conduct training of cooperatives staff to build their awareness and capacity around agroforestry systems, so that they can in turn sensitize the producers.
 - Done at all partner cooperatives in the direct supply chain
- Start agroforestry implementation in the pilot area
 - At least 100 beneficiary farmers are sensitized and voluntarily adopt the Project
 - At least 250 ha of cocoa plots are diagnosed and mapped
 - At least 9,000 forest and fruit seedlings are produced
 - At least 9,000 seedlings planted on at least 250 ha of cocoa plots
 - The 9,000 seedlings planted are monitored and dead plants are replaced
 - At least 100 producers benefit from agricultural kits
- Conduct individual coaching of producers to provide support in the implementation of agroforestry systems.

The Progress

2024 KPIs	Status	Notes
Conduct training of cooperatives staff to build their awareness and capacity around agroforestry systems, so that they can in turn sensitize the producers.	✓	Done at all partner cooperatives in the direct supply chain
Start agroforestry implementation in the pilot area	✓	Started at Guiberoua, Ivory Coast
At least 100 beneficiary farmers are sensitized and voluntarily adopt the Project	✓	124 farmers
At least 250 ha of cocoa plots are diagnosed and mapped	✓	249 ha
At least 9,000 forest and fruit seedlings are produced	✓	12,000 produced in total
The 9,000 seedlings planted are monitored and dead plants are replaced	✓	Done
At least 100 producers benefit from agricultural kits	✓	124 farmers

2025 and Beyond

2025-2027: Scaling Up Participation and Impact

- **Farmer Participation:** Expand the program to include at least **500 farmers** by 2027.
- **Land Coverage:** Increase the agroforestry implementation area from 249 hectares to **1000 hectares** by 2027, ensuring broader environmental impact.
- **Digital Monitoring:** Introduce a **mobile application** by 2025 to monitor tree growth, soil health, and weather conditions.
- **Youth Engagement:** Launch a **Young Farmers Initiative** by 2026, providing tailored training and financial incentives to attract younger generations to sustainable cocoa farming.

2027-2030: Enhancing Training and Social Impact

- **Land Coverage:** Increase the agroforestry implementation area to **2000 hectares** by 2030.
- **Women Farmers Program:** Double the number of women farmers participating in the program by 2028, introducing **microfinancing opportunities** to support income-generating activities.
- **Local Food Systems:** By 2030, create **local distribution networks** for non-cocoa products derived from agroforestry (e.g., fruits), enhancing farmers' economic resilience.